

Solid Symposium 2023

Session: Health Care

Thursday, March 30, 2023 (14:00 to 17:30)



Nürnberg, Fraunhofer Augustiner Hof
30 March 2023

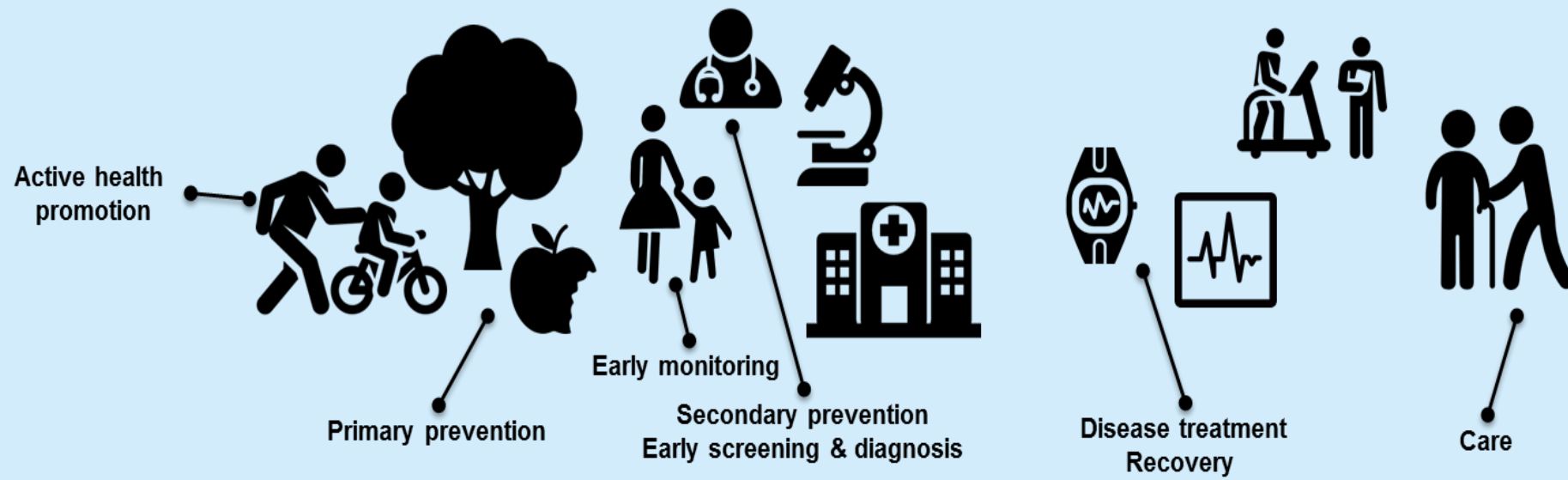
Slot:

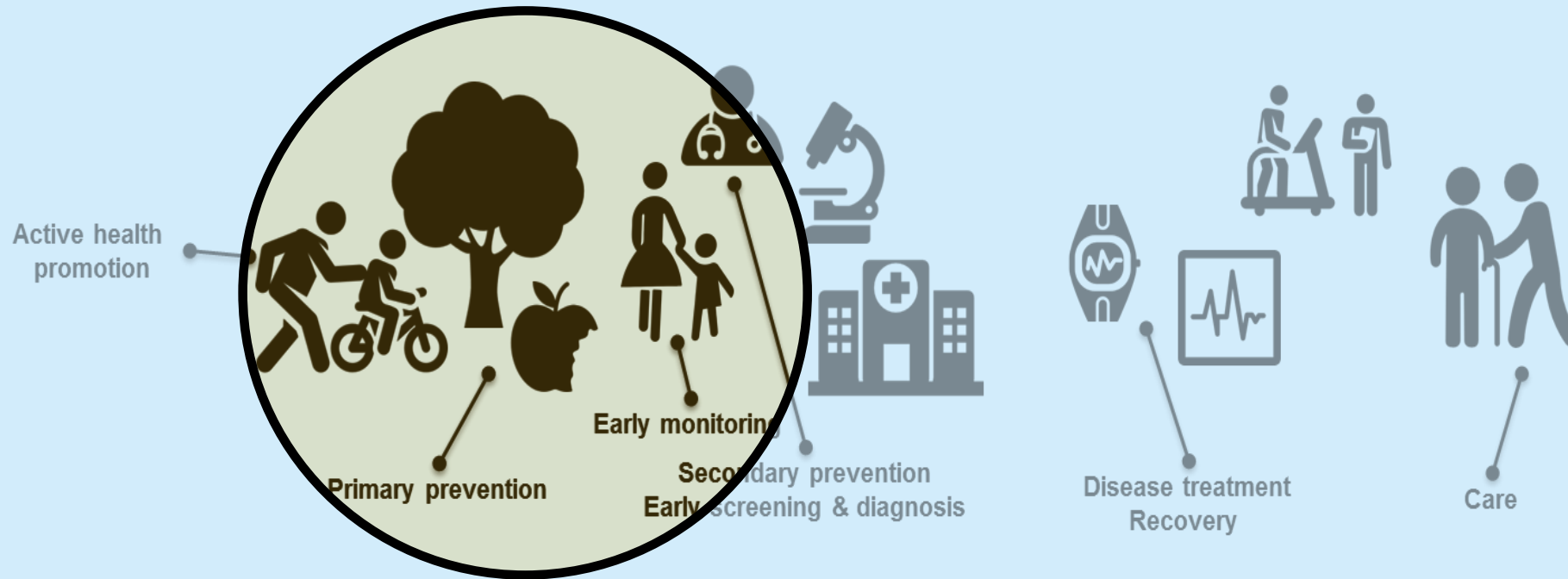
Effects of decentralized health data in
society, politics and EU-Data initiatives

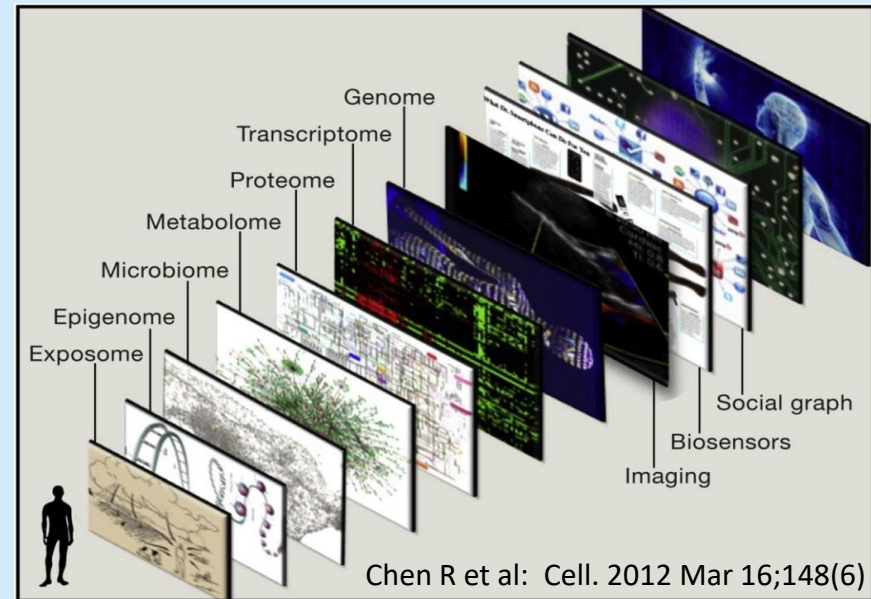
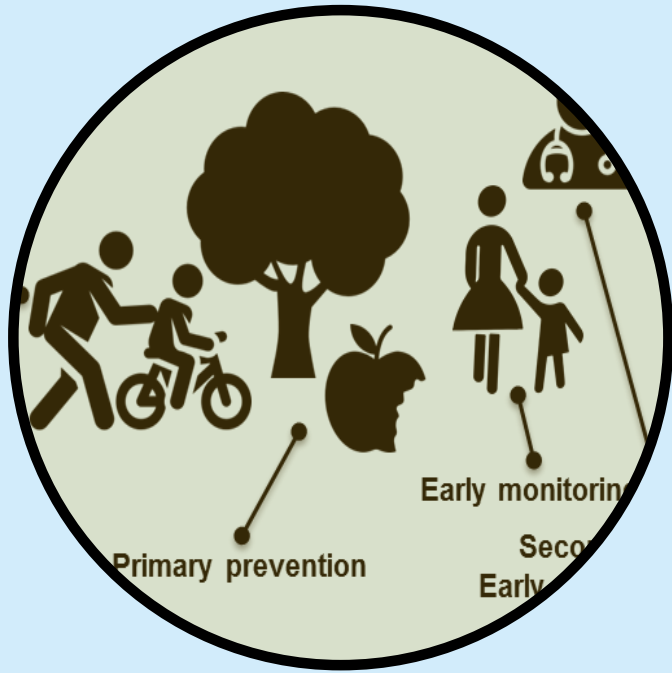
A CITIZEN-DRIVEN ECOSYSTEM FOR PERSONAL HEALTH DATA



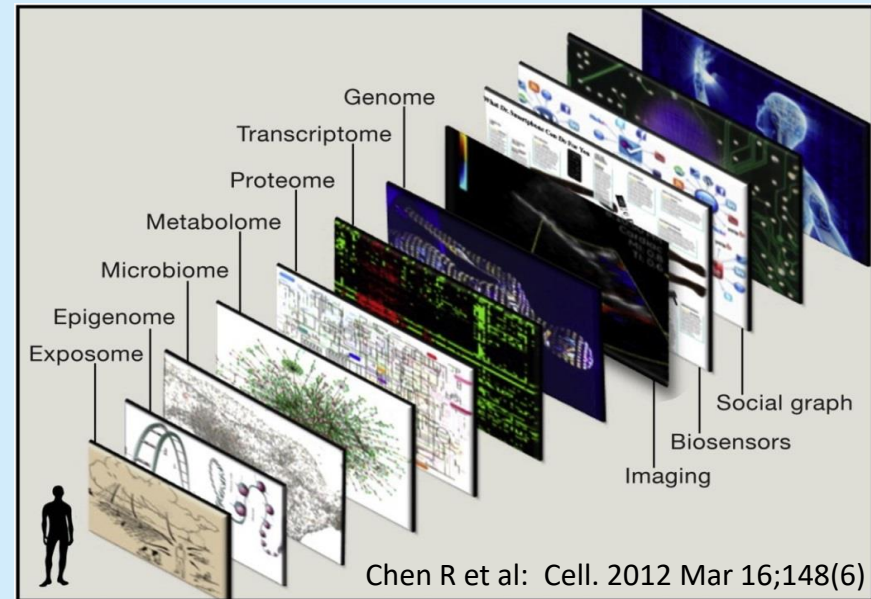
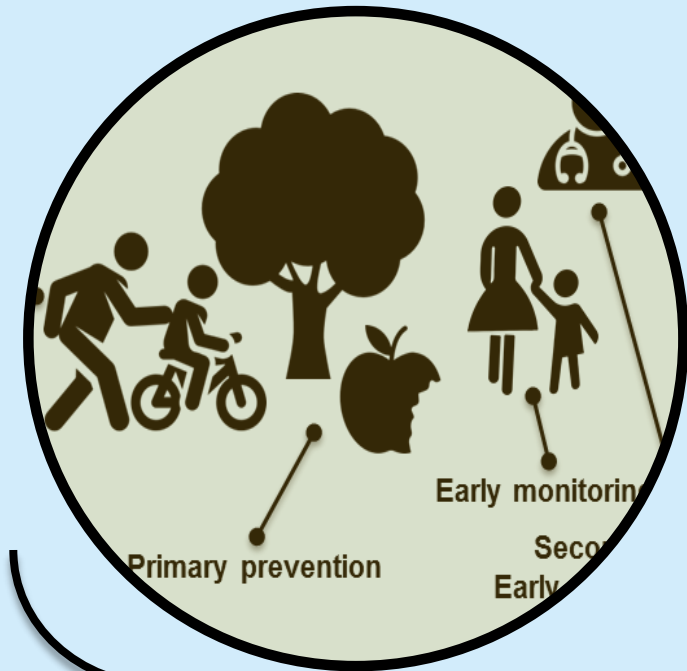
Jef Hooyberghs
VITO – UHasselt
Belgium







INTEGRATIVE PERSONAL OMICS PROFILE

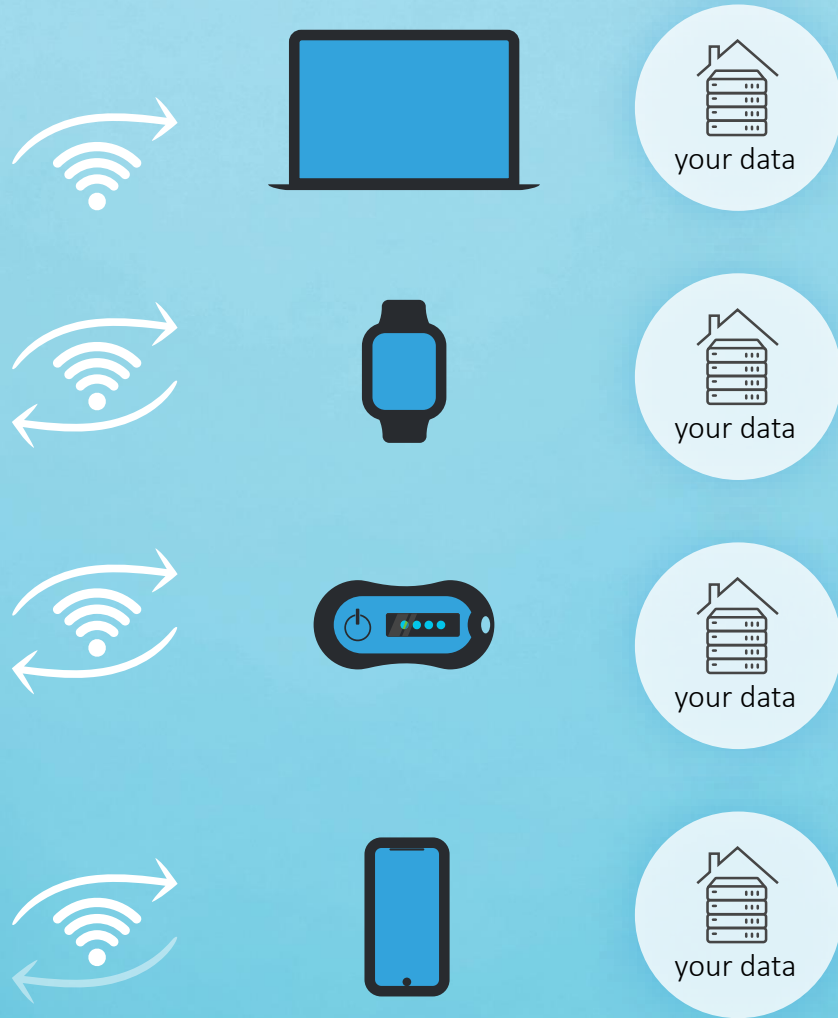


DATA DRIVEN PREVENTION

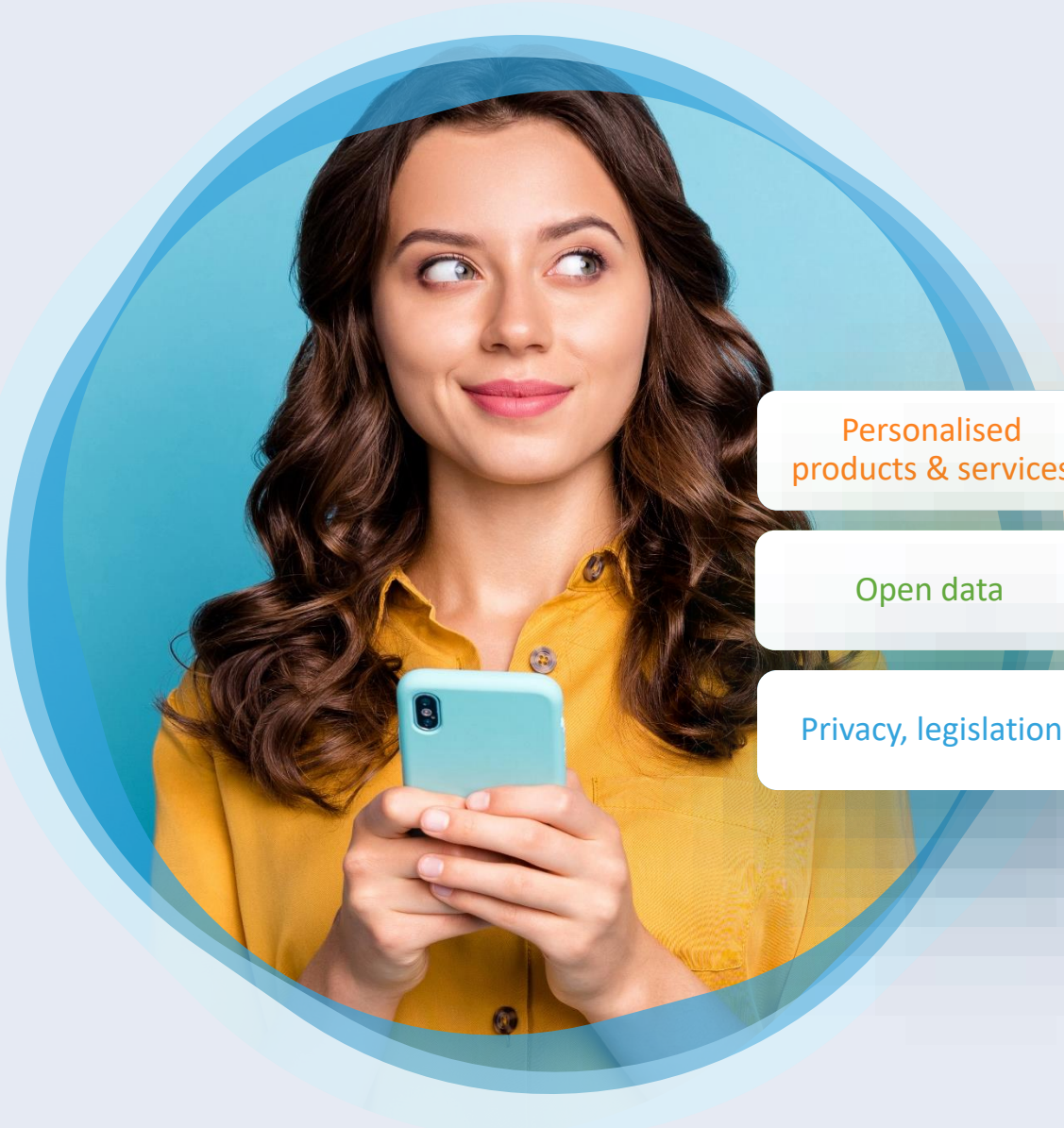
HIGHLY DIVERSE SET OF DATA

INDIVIDUAL DATA

LONGITUDINAL DATA



CURRENT ECOSYSTEM = APPLICATION- CENTRIC



Personalised products & services



Data economy

Open data



Innovation

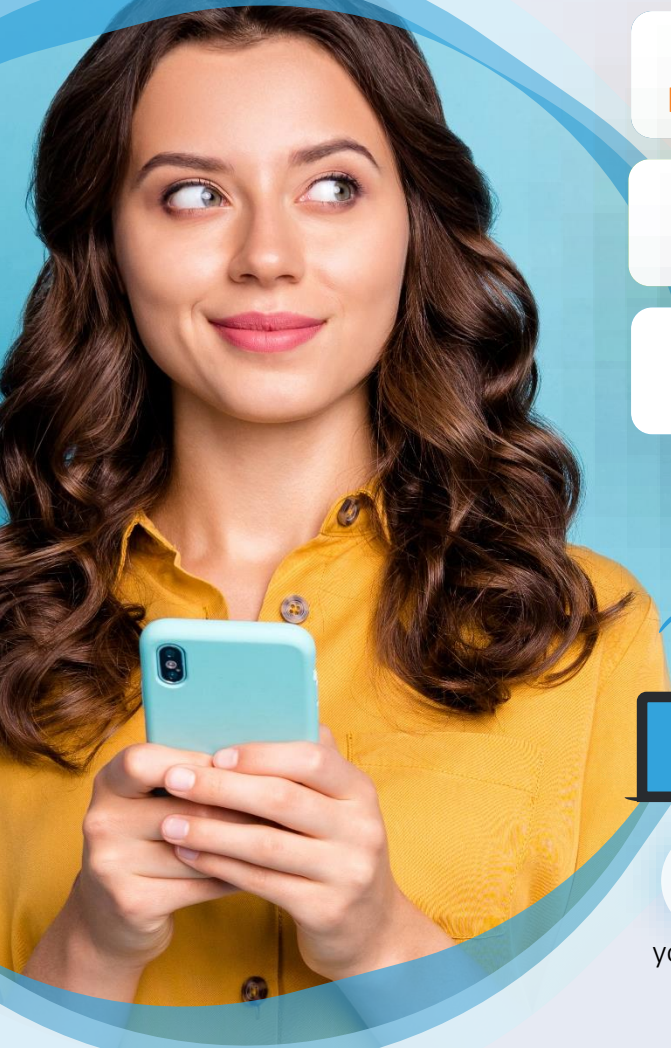
Privacy, legislation



Protect & engage end users

SOCIO-ECONOMIC TRENDS

Global & European

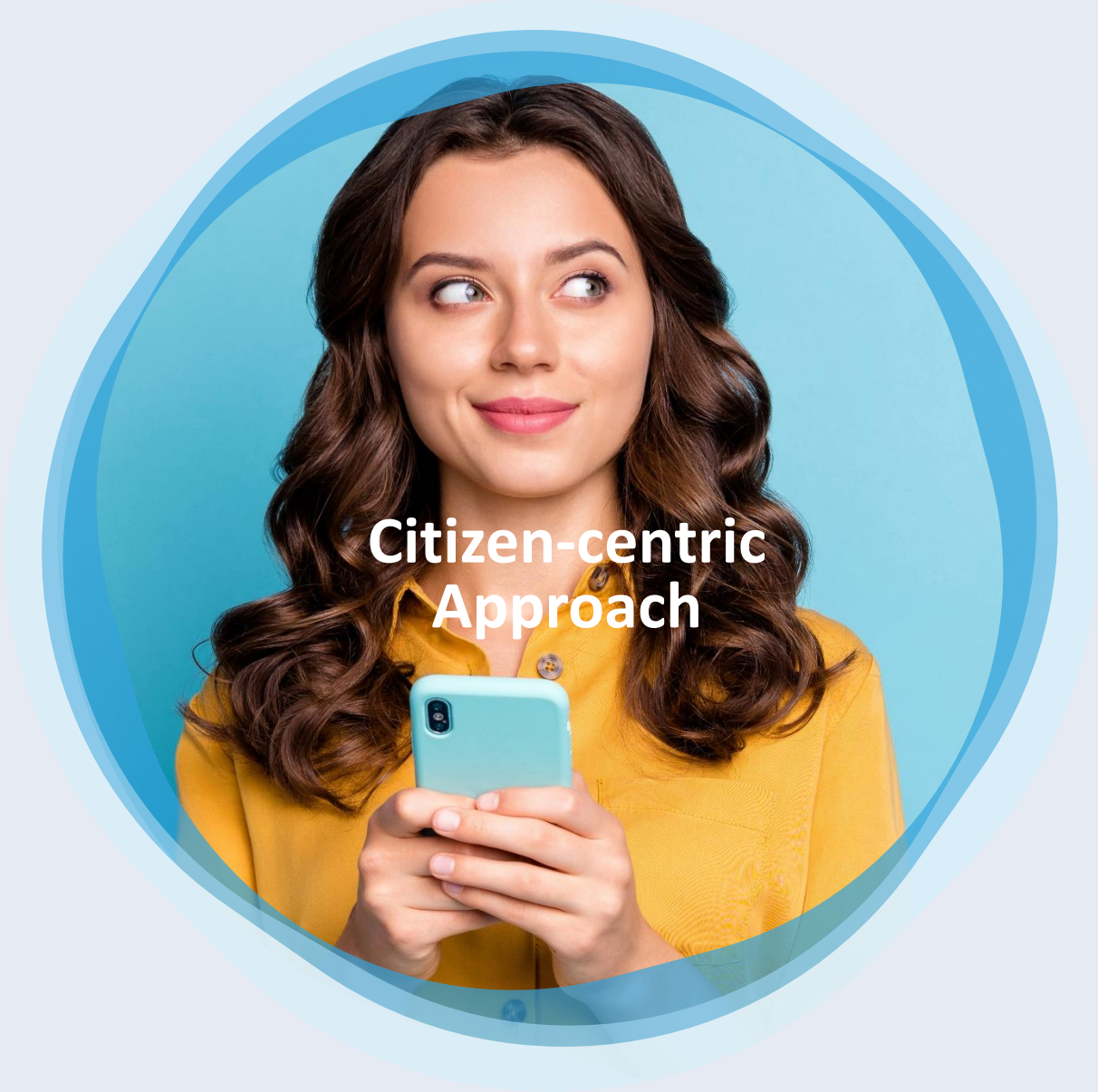


Application-centric

- Counteracting trends
- Ethical issues
- Oligopoly
- ...

SOCIO-ECONOMIC TRENDS

Global & European

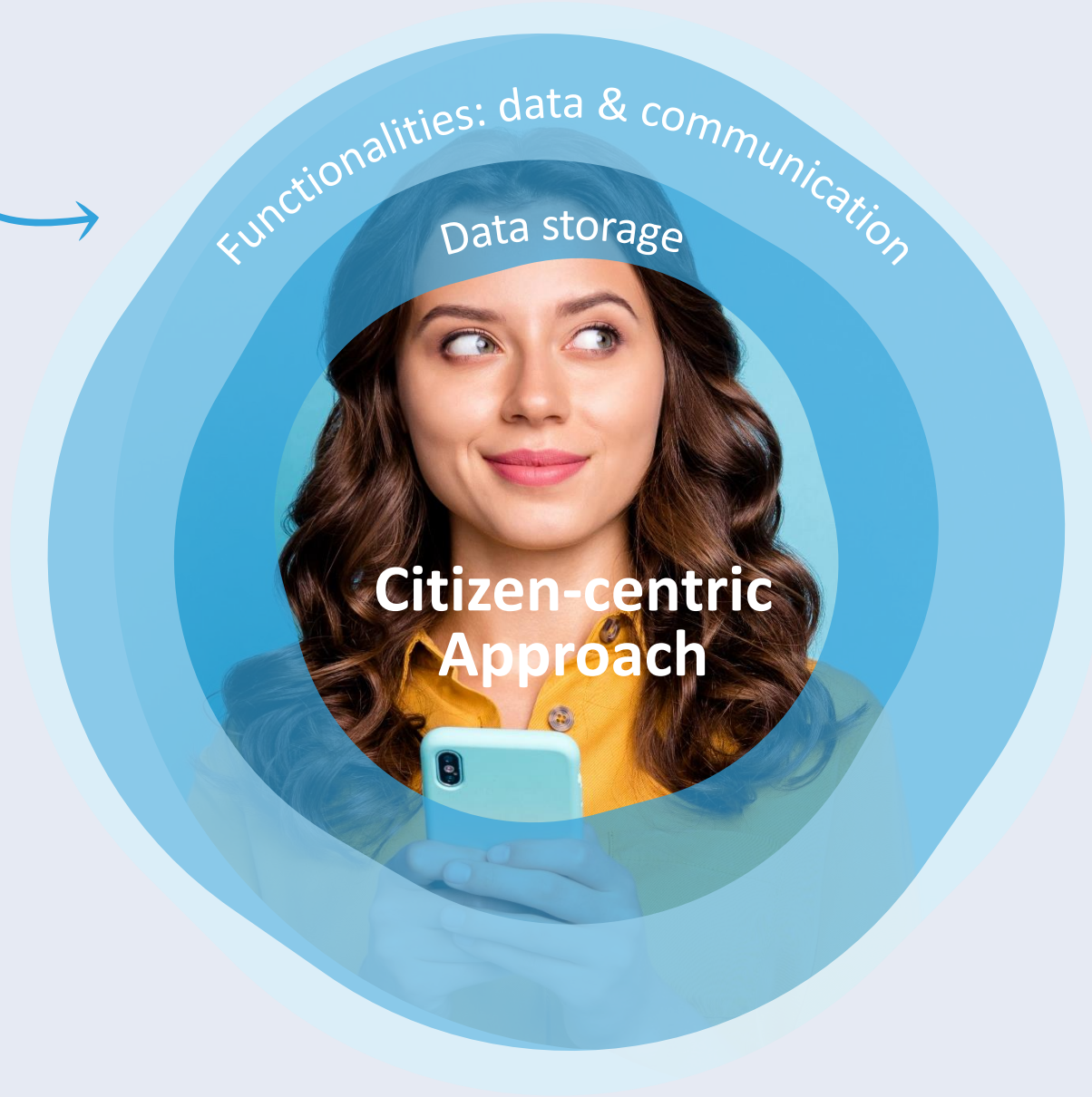


**Citizen-centric
Approach**

**CITIZEN-
CENTRIC
ECOSYSTEM**



Creation and capture of personal health data



Functionalities: data & communication

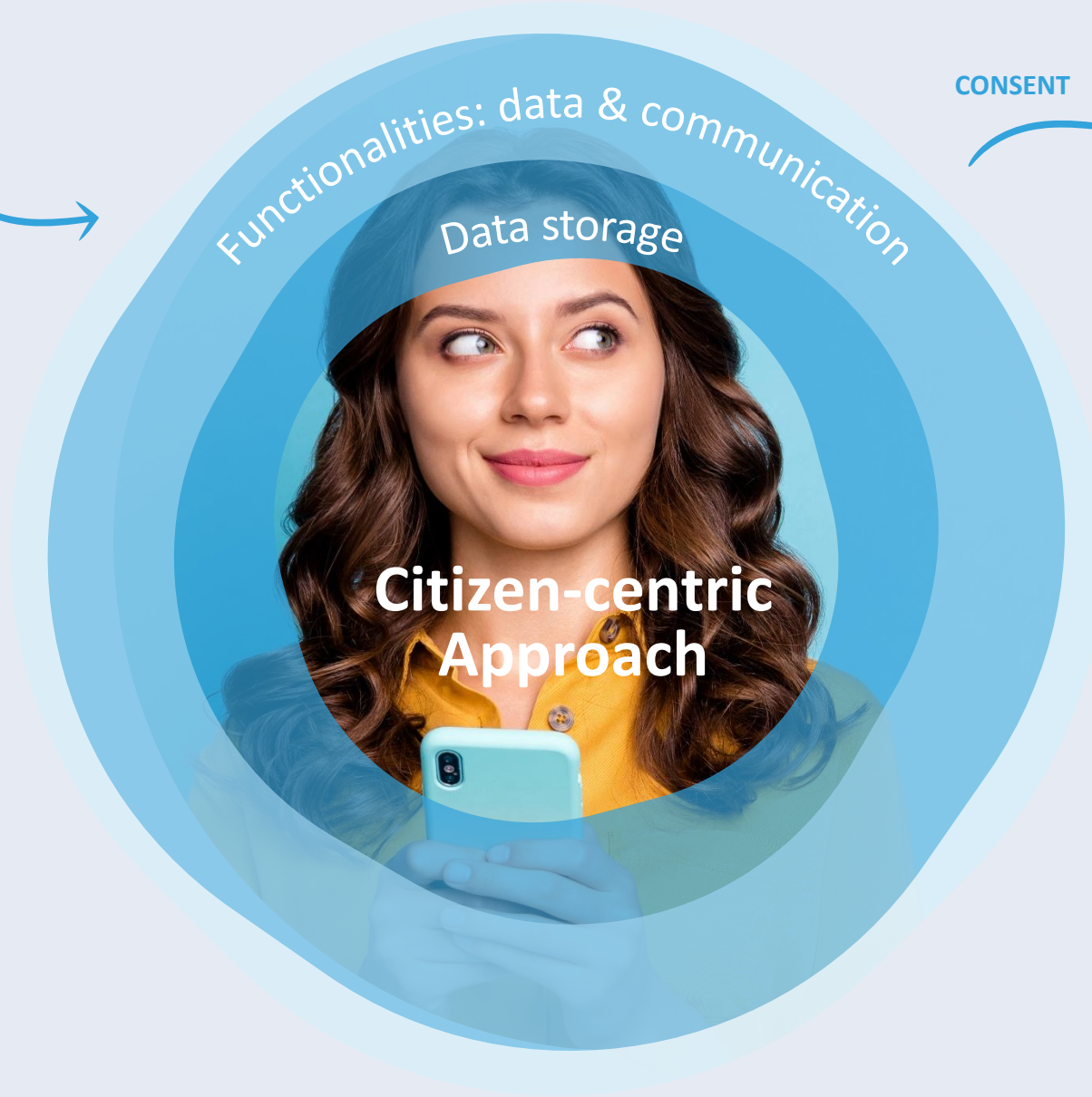
Data storage

Citizen-centric Approach

CITIZEN-CENTRIC ECOSYSTEM



Creation and capture of personal health data



CONSENT



R&D innovation

Academia

Civil Society

Public authorities

Industry

CITIZEN-CENTRIC ECOSYSTEM



Creation and capture of personal health data



CONSENT



R&D innovation

Academia

Civil Society

Public authorities

Industry

CITIZEN-CENTRIC ECOSYSTEM

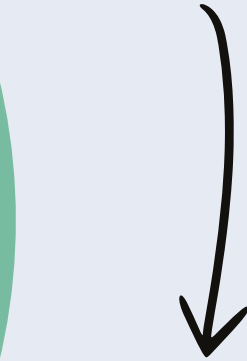


Personalised products & services

SEPARATION OF DATA & SERVICE
DATA ACCESS, NOT DATA GOVERNANCE



R&D innovation



Personalised products & services

Open innovation ecosystem

Systematic user co-creation approach

Integration innovation in real life

Operates as intermediary among companies, citizens, research & government

Rapid prototyping and validation to scale up

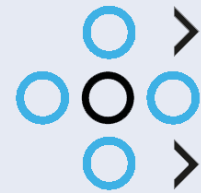
A LEVEL PLAYING FIELD



R&D innovation



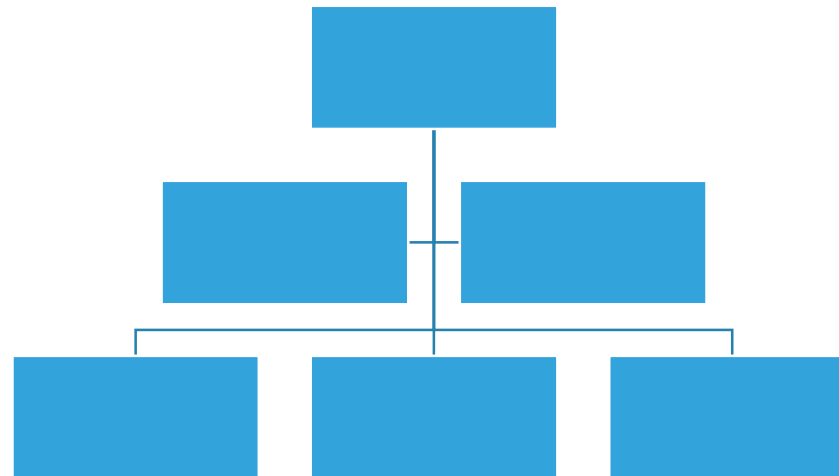
Personalised products & services



we are

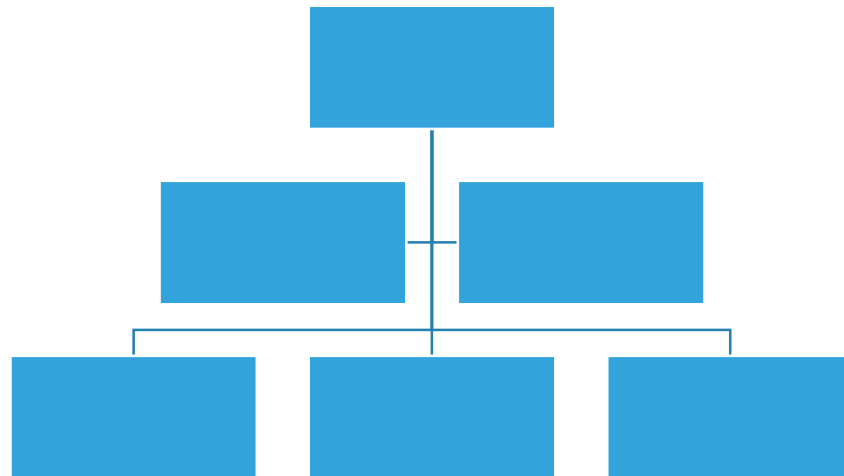
LOCAL - FLANDERS - INTERREGIONAL

 we are



LOCAL - FLANDERS - INTERREGIONAL

 we are



INTERREGIONAL



VANGUARD INITIATIVE

SMART HEALTH

PERSONAL DATA
MANAGEMENT PLATFORM



DEPARTEMENT
ECONOMIE
WETENSCHAP &
INNOVATIE

Sharing personal data? We do it every day and more and more often. **But what happens next with that data?** Flemish Minister of Innovation Hilde Crevits is now co-investing in the development of an Interregional Platform for Personal Data containing a personal digital safe. Flemish Research Centre VITO is developing the system and is further developing it in a broader partnership



INTERREGIONAL

we are

VANGUARD INITIATIVE

SMART HEALTH

PERSONAL DATA MANAGEMENT PLATFORM

Inter-regional platform



Regional ecosystems

- Regional Innovation Nodes
- Flanders
- East Netherlands
- Northern Ostrobothnia
- ...

Health Priorities in the Digital Single Market Strategy



Policy news!

The European
Commission publishes
Data Act

[READ MORE](#) ▼

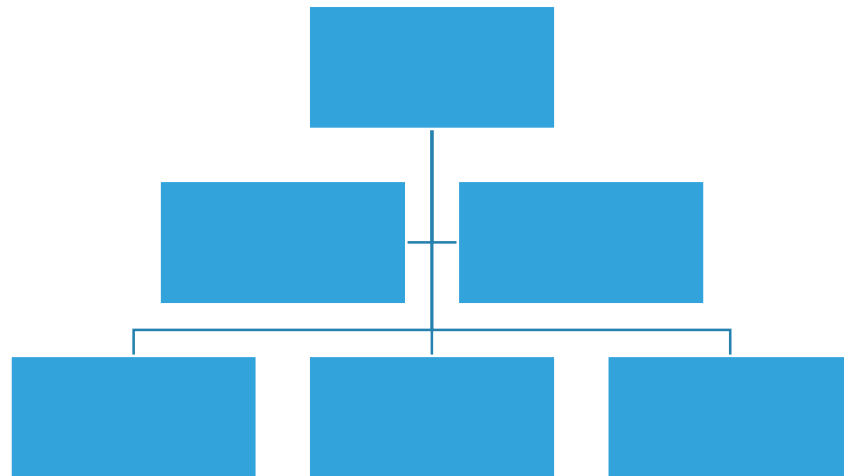


For a European
Health Data Space

#HealthUnion

LOCAL - FLANDERS - INTERREGIONAL

 we are



PARTNERSHIP

 we are

DOMUS
MEDICA

zorg net
ICURO

 vito

Vlaams
Patiëntenplatform


B Koning
Boudewijnstichting
Samen werken aan een betere samenleving

POLICY DOMAINS



INNOVATION



DEPARTEMENT
ECONOMIE
WETENSCHAP &
INNOVATIE

HEALTH



DEPARTEMENT
WELZIJN
VOLKSGEZONDHEID
EN GEZIN

DIGITIZATION



DIGITAAL
VLAANDEREN

KICK OFF



Q3 - 2022

Data Utility Company



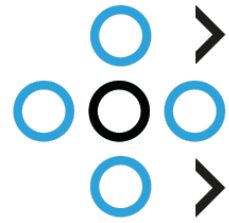
DEPARTEMENT
ECONOMIE
WETENSCHAP &
INNOVATIE



DEPARTEMENT
WELZIJN
VOLKSGEZONDHEID
EN GEZIN



DIGITAAL
VLAANDEREN

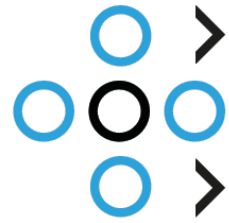


we are



- **A citizen-centric ecosystem**

Empowerment

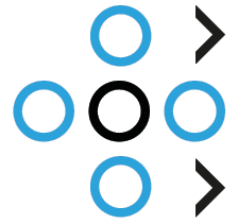


we are



- A citizen-centric ecosystem
- Separating data from applications

Digital Technology

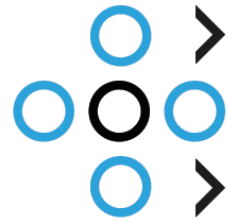


we are



- A citizen-centric ecosystem
- Separating data from applications
- **Shaping applications**

Innovation



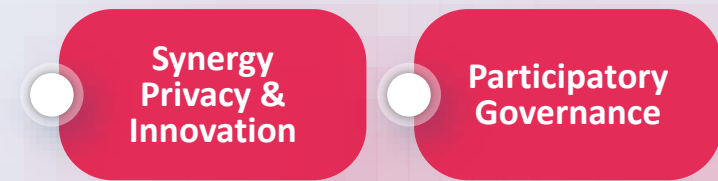
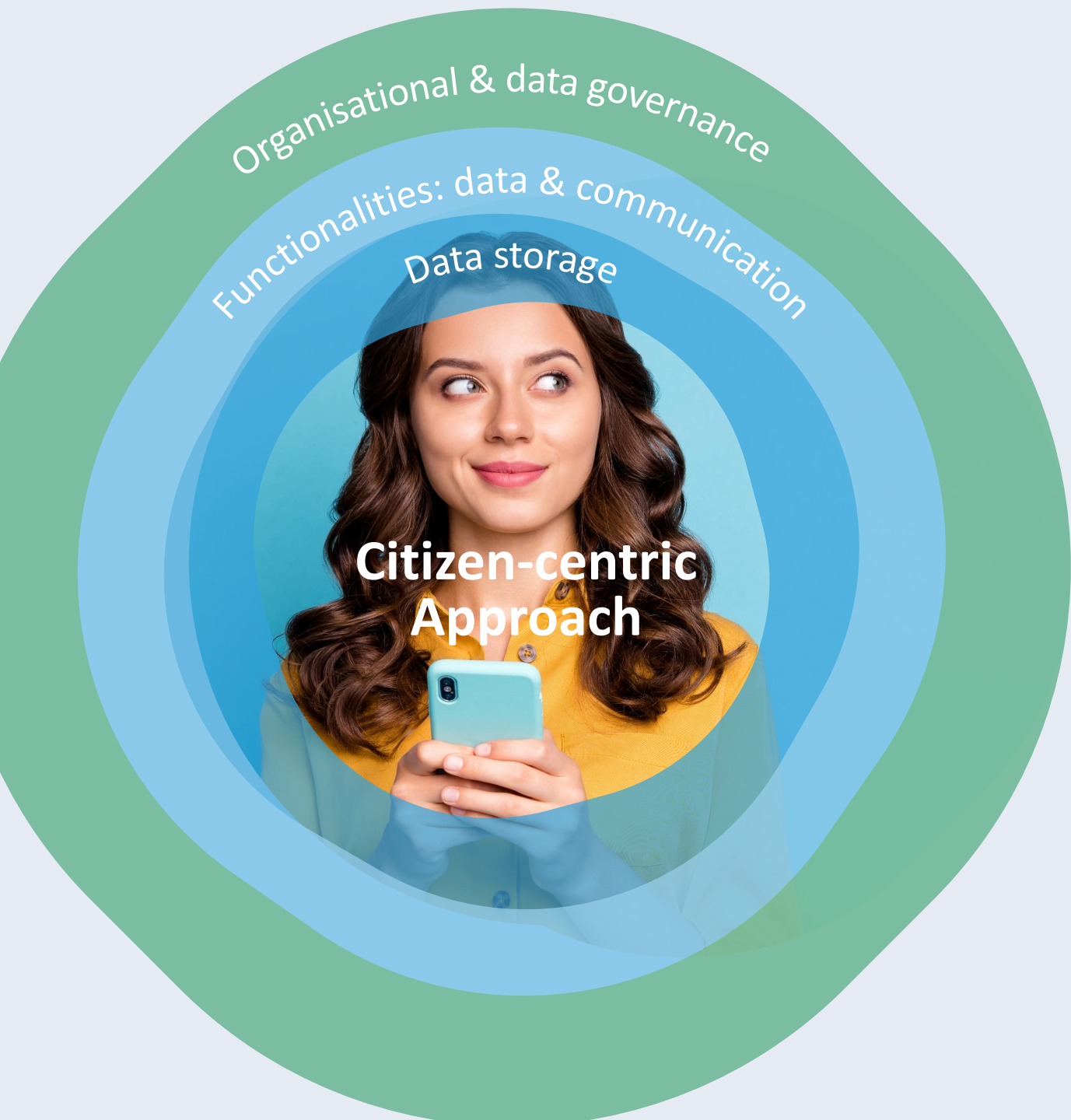
we are



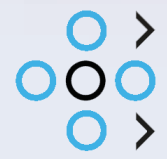
- **A citizen-centric ecosystem**

Empowerment

- Separating data from applications
- Shaping applications

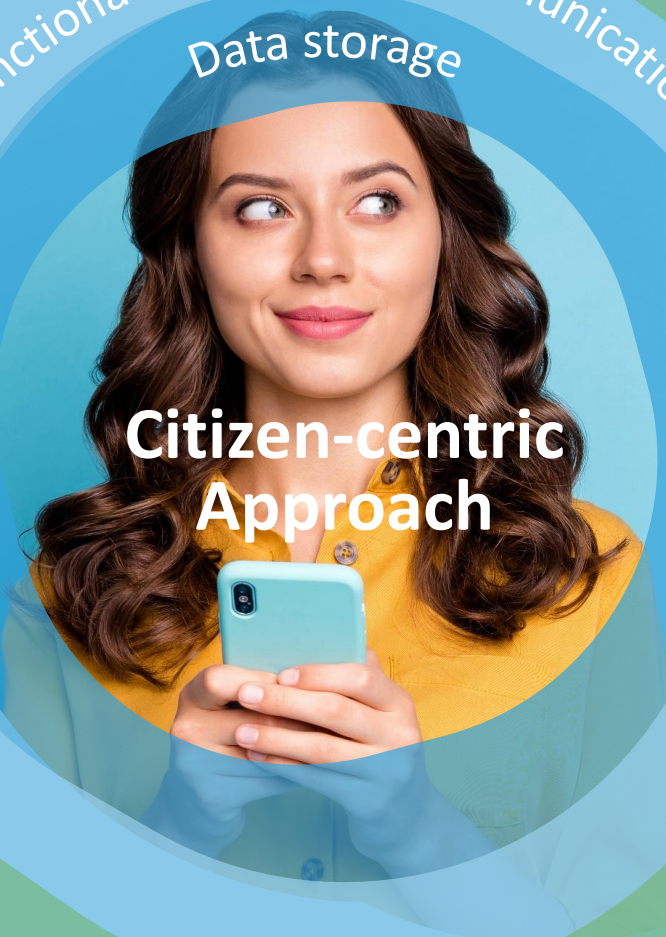


TRUST



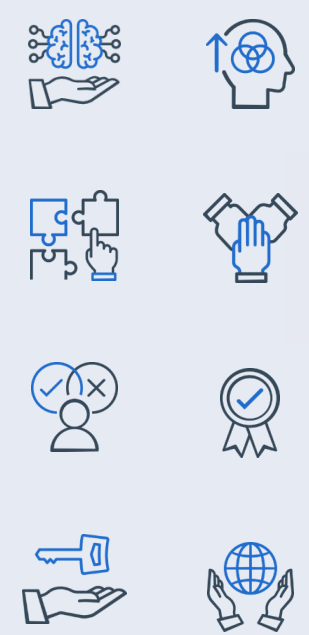
we are

Organisational & data governance
Functionalities: data & communication
Data storage



Citizen-centric Approach

GUIDING PRINCIPLES



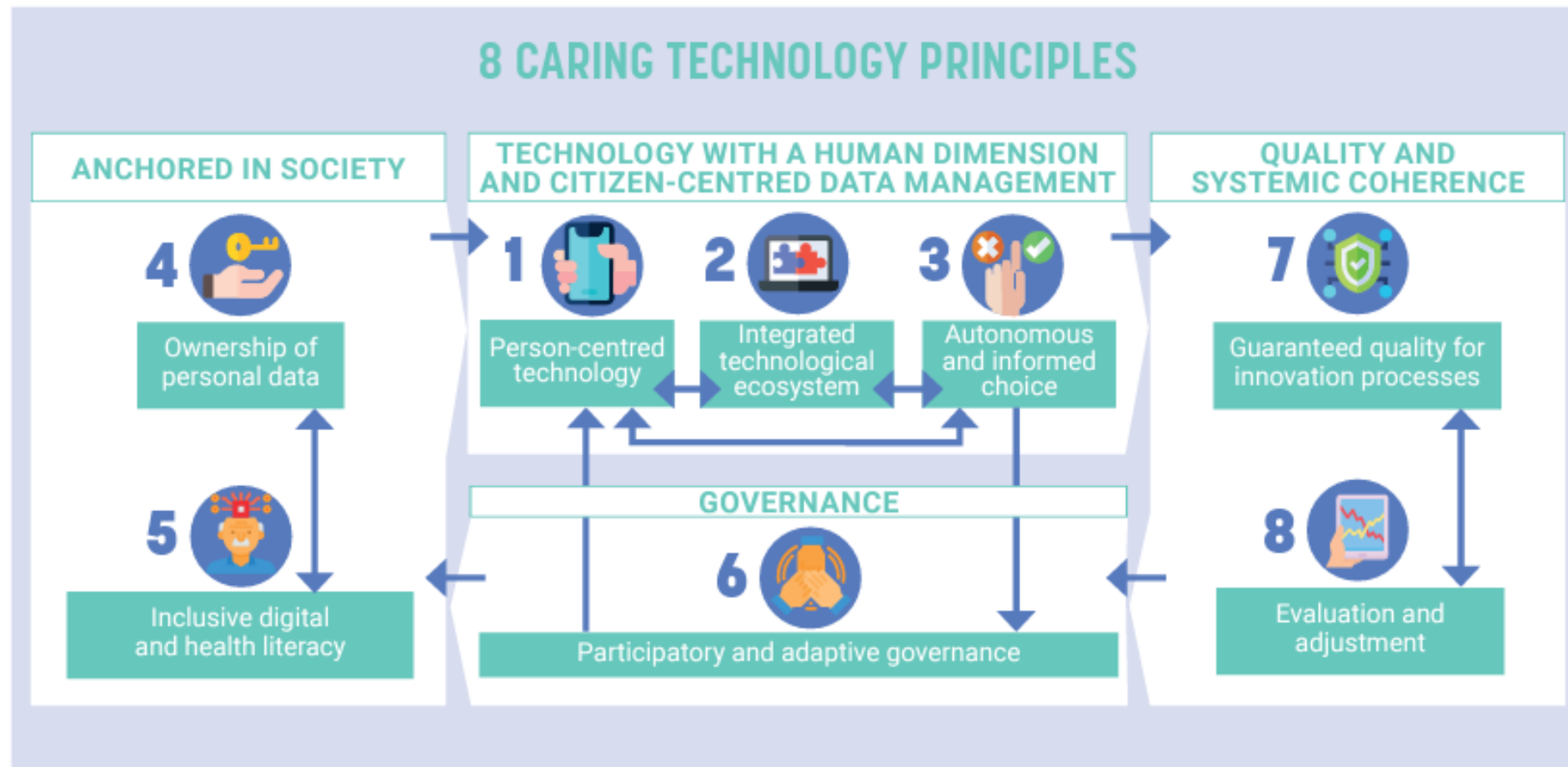
Synergy
Privacy &
Innovation

Participatory
Governance

TRUST

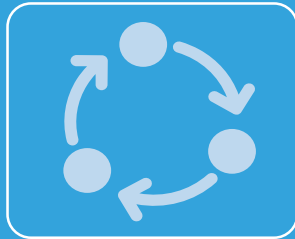
we are

FRAMEWORK OF CARING TECHNOLOGY PRINCIPLES: 8 GUIDING PRINCIPLES



<https://www.fondsdanieldeconinck.be/initiative/caring-technology/?lang=en>

BLUEPRINT RESPONDS TO NEEDS AND CHALLENGES



Blueprint process guidance

- Objective decision making
- Making principles practical



Good practices

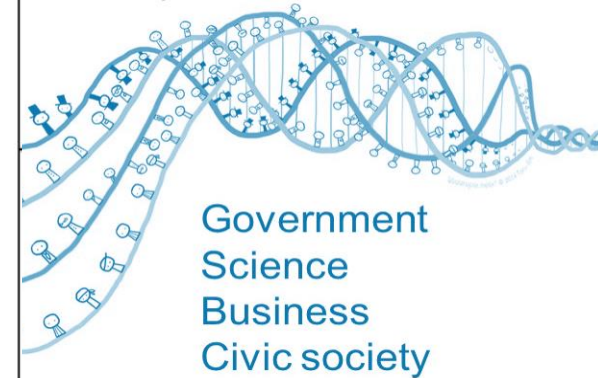
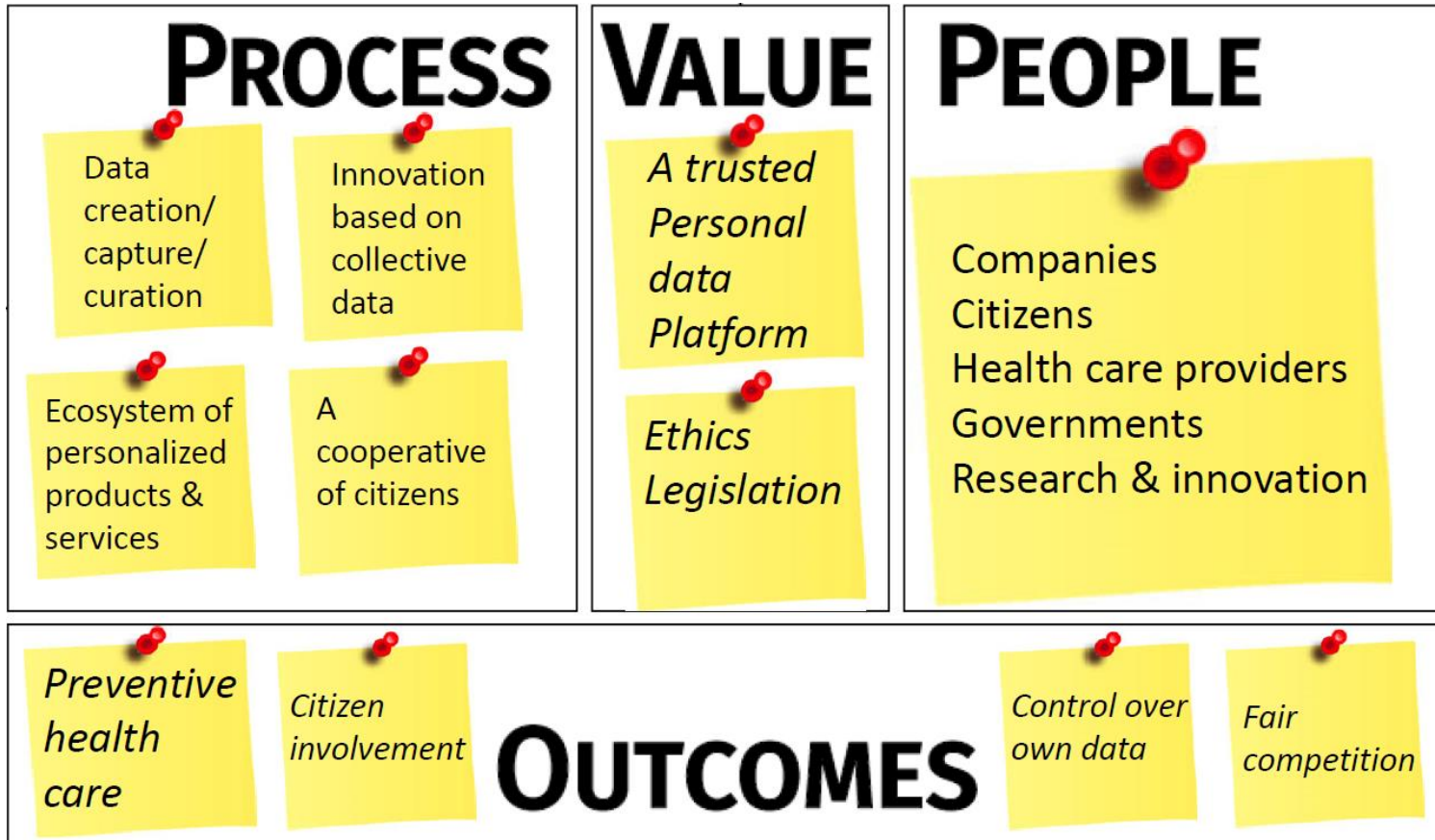
- Learning to deal with modern technology
- Tech affordability
- Resistance to innovations
- ...

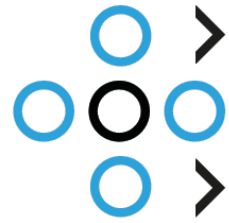


Workshops with management, workforce, ...

- Idea implementation within organisation
- Gap between end-user and developer
- Tech integration

BUSINESS MODEL OF GOVERNANCE (ECOSYSTEM)





we are



- A citizen-centric ecosystem
- **Separating data from applications**

Digital Technology

- Shaping applications

Data storage

Citizen-centric Approach



Move freely
between services



Reuse data across
APPS

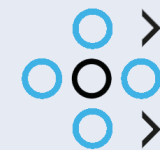


Connect with anyone



Select what you
share precisely

TECHNOLOGY



we are



<https://solidproject.org/>



SOLID

is a technical specification and architecture

- Originating from MIT
- Combination of W3C standards
- Builds on top of the existing Web

that lets people store their data securely in decentralized data stores called Pods.

A SOLID POD is

A website with data

Hosted by a webserver

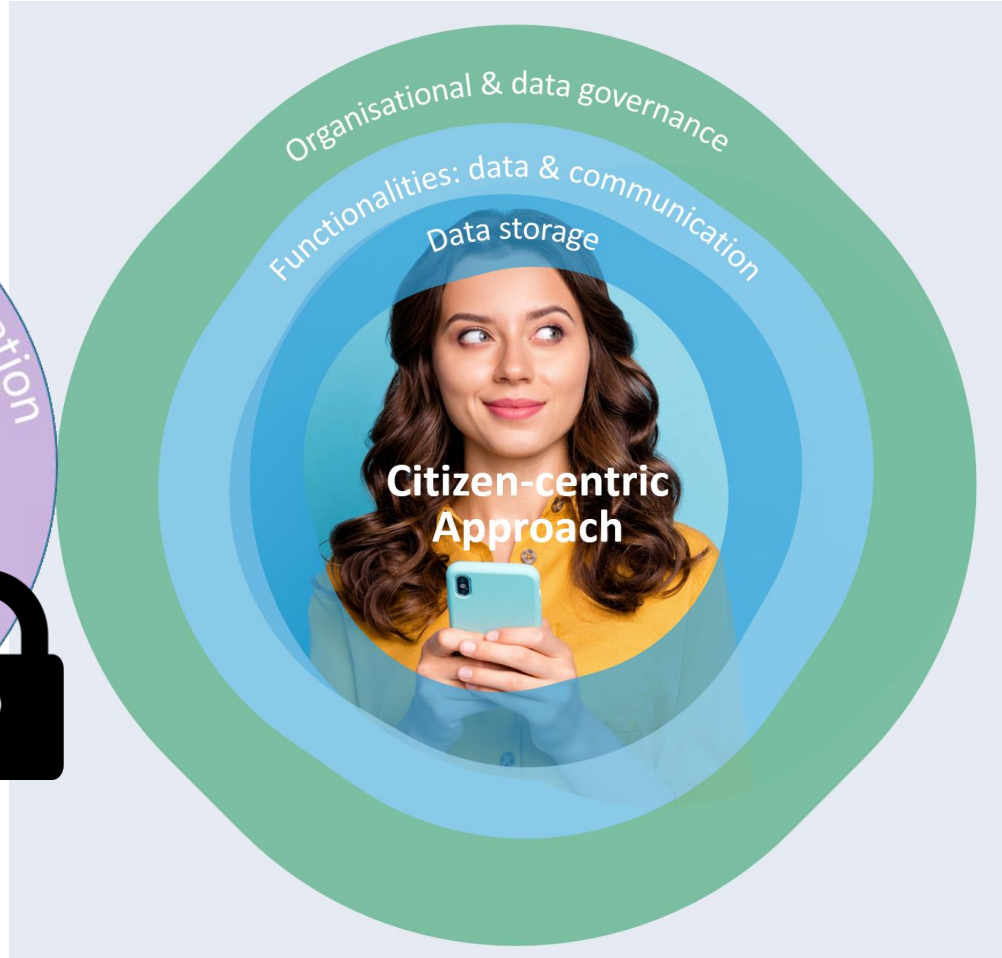
Application agnostic interface

Can contain any data

Comply with Linked Data standards and using RDF

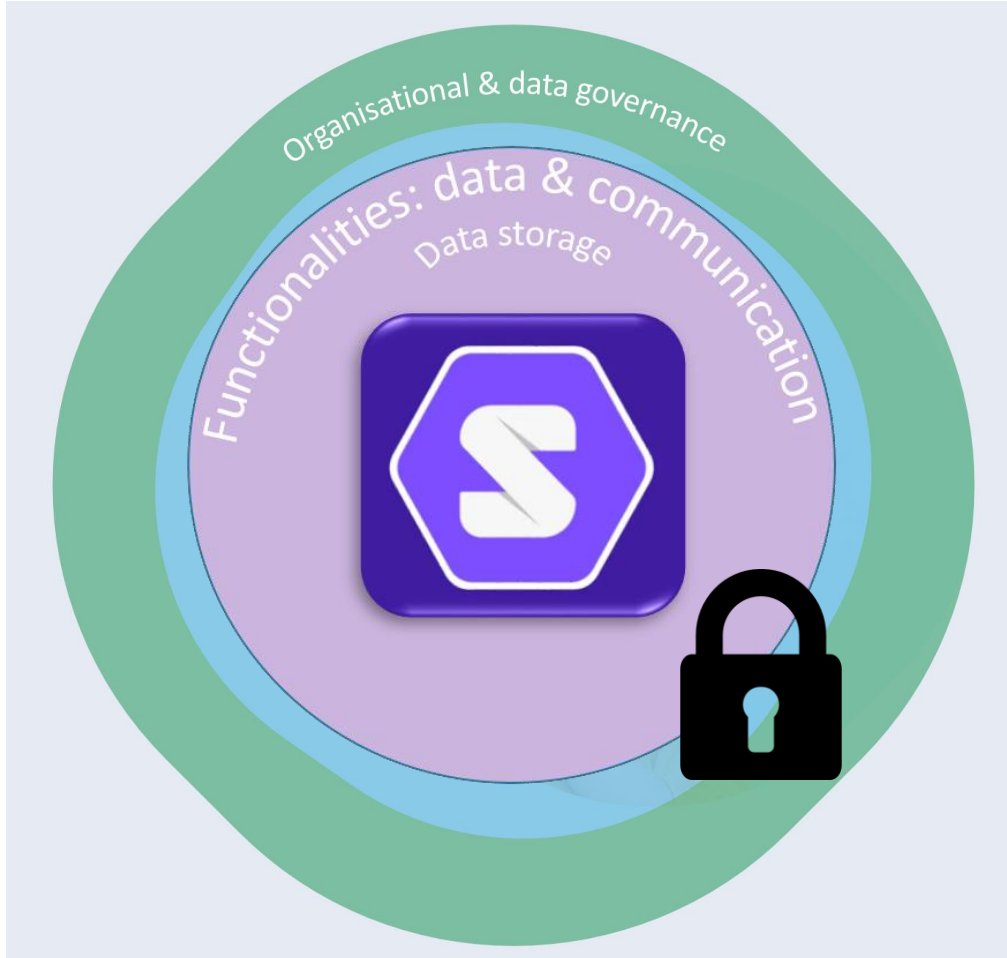
Technological challenges

- How do I run my Pod?
- How do I keep track of my data sharing connections?
- Can a partner also query my data directly?
- Can I delegate my data sharing to a trusted partner?



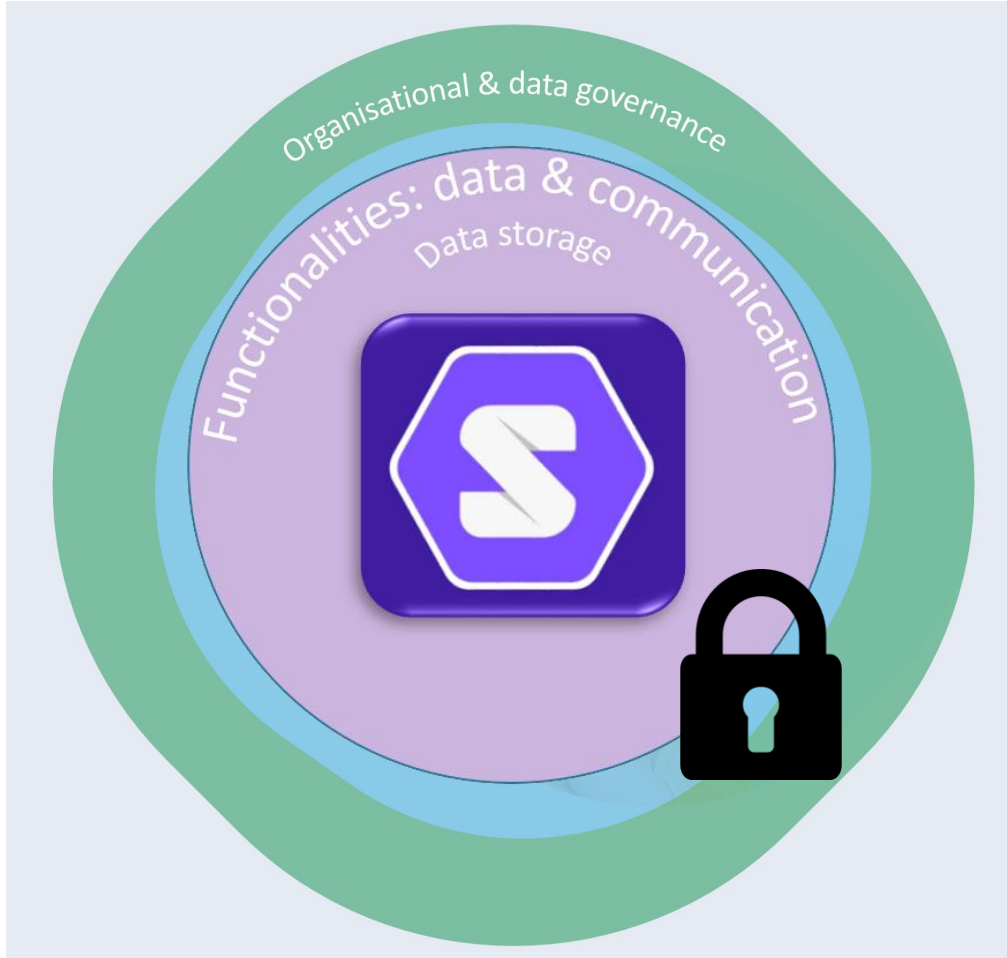
TECHNOLOGY

we are



TECHNOLOGY

 we are



data utility company
Server hosting



DIGITAAL
VLAANDEREN

SolidLab
Expert advice

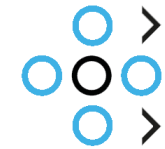


DEPARTEMENT
ECONOMIE
WETENSCHAP &
INNOVATIE

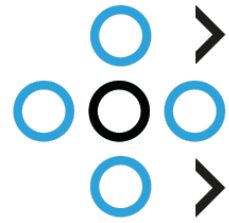
IT industry / SMEs
Consultancy

IT industry / SMEs
App development

TECHNOLOGY



we are



we are



- A citizen-centric ecosystem
- Separating data from applications
- **Shaping applications**

Innovation

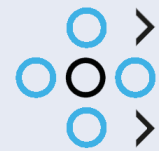


R&D innovation



Personalised products & services

**INNOVATIONS
APPLICATIONS**



we are



<https://savedata.be/en>



- **COOCK:** Collective R&D and Collective knowledge sharing/dissemination
- **PURPOSE:** Valorizing (basic) research results by accelerating the introduction of technology and/or knowledge to a broad group of companies.



flanders.healthTech
bridging technologies for healthcare innovation



Define relevant Use Cases



Define the Business Case



Request for Funding (or not)



Implement Use Cases

USE CASE: TELEMONITORING



- J&J en BeWell:



- CLL: Chronic lymphocytic leukaemia
 - Treatment
 - Watch & wait
- Goal: expand telemonitoring to watch & wait
 - Greater need for follow up
 - Uncertainty
 - Impact on quality of life

USE CASE: TELEMONITORING



Needs in this use case

- Give patients more control
- Get applications linked to data to improve quality of life & follow-up
 - Personalized advice
 - Contact health care professional when problems arise
- Attention to ethical & legal framework



BeWell.
innovations

PATIENT CONTROLS PERSONAL HEALTH SENSOR DATA

Welcome to the VITO
Solid Sandbox

Choose your login method

Aanmelden

Sign out

Your account

Email frederik.byl@vito.be

Password

Stay logged in

Log

[Sign up](#) [Forgot password](#)

Sensor Monitoring

Analyse dashboard

Hartslag

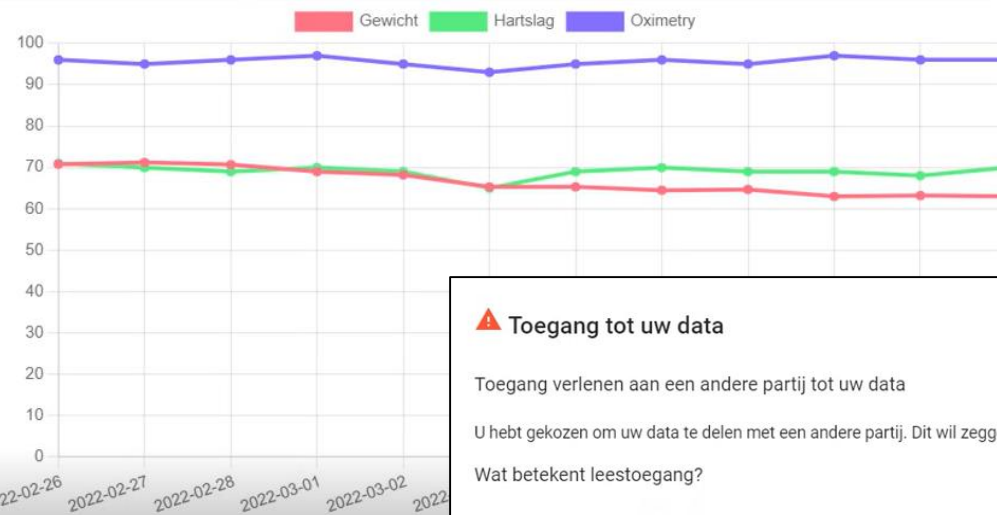
Zuurstof

Gewicht



Er is een gewichtsverlies van meer dan 10% in voorbije 6 maanden. Deel deze data met uw arts

Delen met een arts



Toegang tot uw data

Toegang verlenen aan een andere partij tot uw data

U hebt gekozen om uw data te delen met een andere partij. Dit wil zeggen dat deze partij leestoeegang krijgt tot uw data. U kan op elk moment deze leestoeegang intrekken.

Wat betekent leestoeegang?

Uw data blijft nog altijd in uw data pod, maar de andere partij mag de data van u op deze locatie bekijken.

Annuleren

Delen

GENERAL PRACTITIONER MONITORS & PROVIDES FEEDBACK



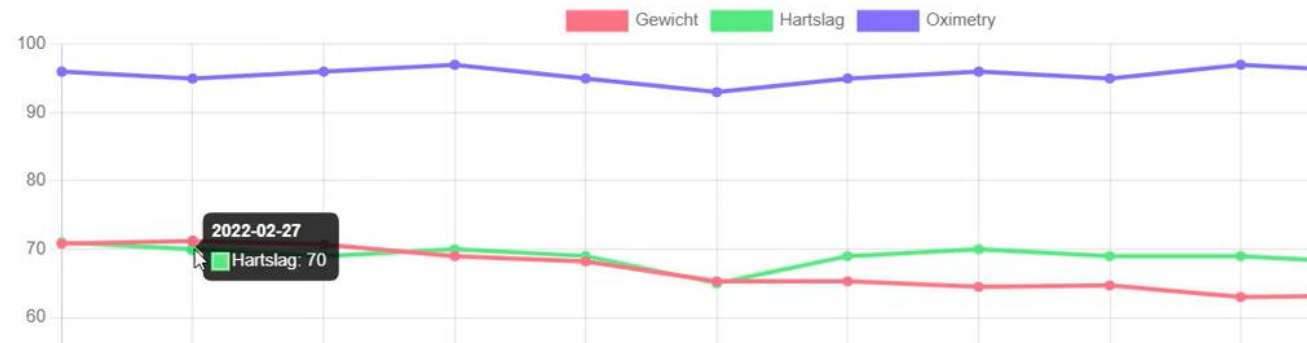
Dokter Monitoring

Geef uw webld om uw dashboard en patiënteninformatie te consulteren.

Solid Server name

1 gewichtsverlies van meer dan 10% in voorbije 6 maanden.

Data van de patient



2022-03-06	64.7	95	69
2022-03-07	63	97	69
2022-03-08	63.2	96	68
2022-03-09	63	96	70

Beantwoorden

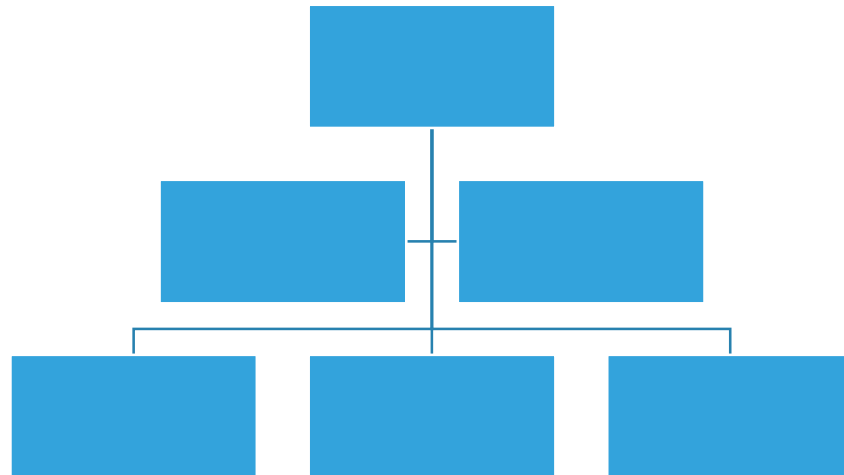
Geef feedback

Beste Frederik, uw oximetry en hartslag liggen binnen de voor u acceptabele grenzen. Een gewichtsverlies van 10% over 6 maanden kan wijzen op een onderliggend probleem. Gelieve zo snel mogelijk een afspraak te maken om verder te onderzoeken.
Vriendelijke groeten,
Jens



LOCAL - FLANDERS - INTERREGIONAL

 we are



EMPOWER CITIZENS ON HEALTH PROMOTION



BIBOPP



**Tools for self-
management on health
promotion and
prevention**

**Co-creation and
participation with all
stakeholders**

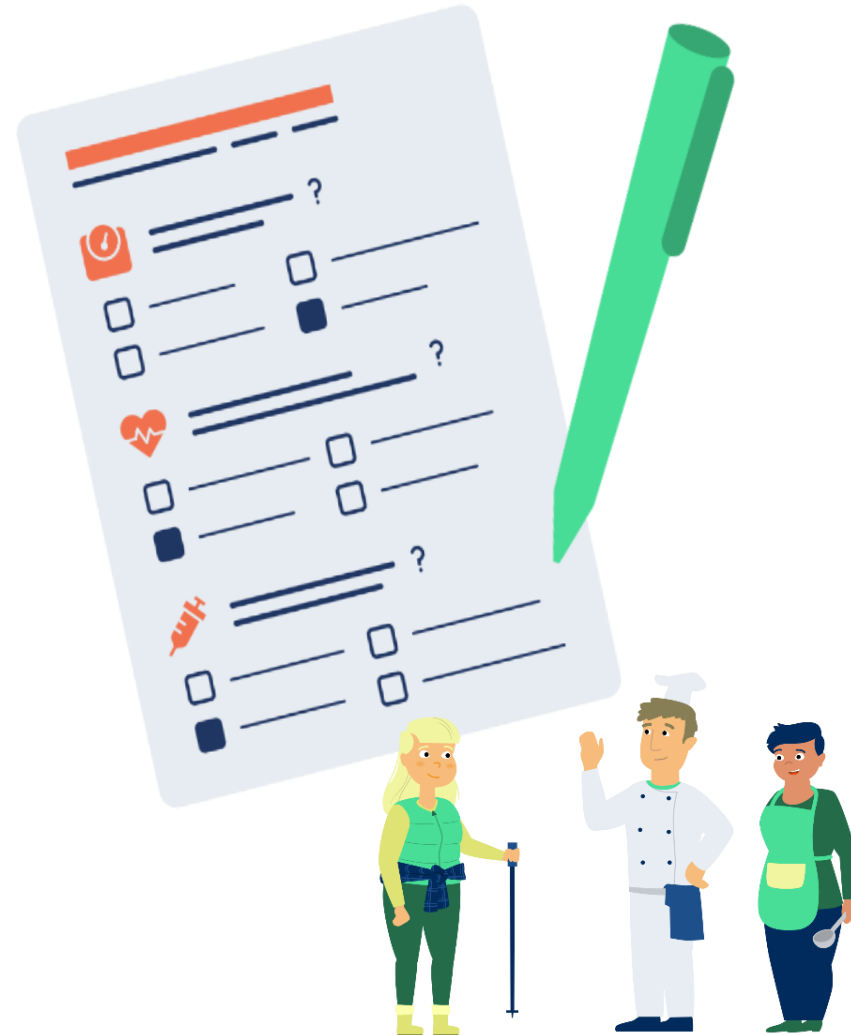


CREATION AND CAPTURE OF PERSONAL HEALTH DATA

REAL WORLD DATA

Online surveys

Through digital services



Medical background

Lifestyle

Behavior

Personal preferences

...

domus
medica

GEZONDHEIDSGIDS

REUSE OF DATA

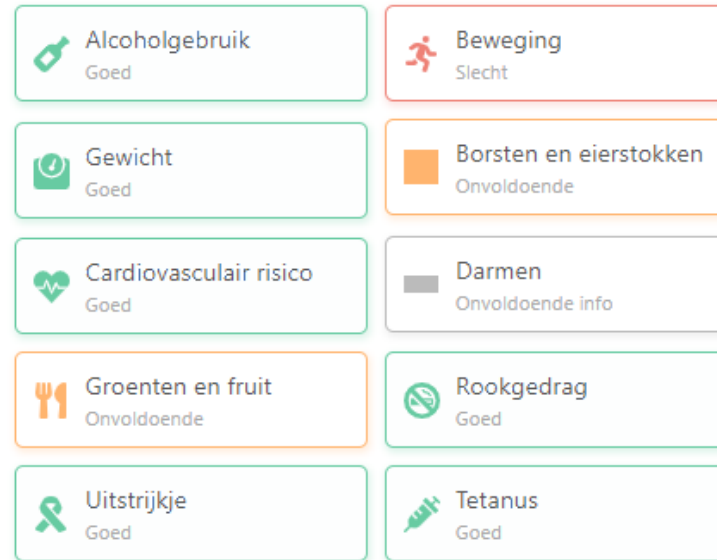


Hallo! Ik ben Bob, de automatische gesprekspartner van BIBOPP. Ik help je graag bij vragen.

Hoe werk ik? Ik stel een aantal vragen. Ik laat verschillende antwoorden zien. Klik op het antwoord dat past bij je vraag.

Laten we starten! Waarover gaat je vraag precies?

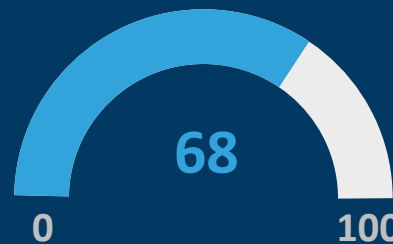
Klik op één van de knoppen om te antwoorden:



19 and Me: COVID-19 Risk Score Calculator

[Score](#) [Method](#) [FAQ](#)

The risk score for people with similar characteristics and behaviors as you is



BIBOPP Startpagina [Mijn actieplan](#) [Mijn coronarisico](#)

Hallo Nathalie

Jouw levensstijl:
Beweging Gezonde voeding

Jouw aandoeningen:
Risico op borst- en eierstokkanker

[Profiel wijzigen](#)
[Verberg profiel](#)

Wis alle filters **180 resultaten**

Toon enkel mijn favorieten

Actiepunten
Bewegen Gezonde voeding Ziekte-educatie

Selecteer actiepunten

Categorieën
Alle categorieën zijn geselecteerd.
Selecteer categorieën

Postcodes
2400 - Mol
Selecteer postcodes

Van dd/mm/yyyy Tot dd/mm/yyyy

Aantal personen
 Individueel
 In groep

Plaats
 Online
 Buiten
 Andere

LEZING OF CONGRES
Blijvend gewichtsverlies
donderdag 27 januari 2022
Gewicht Gezonde voeding
Locatie: Online Prijs: Betaald

SPORT EN BEWEGING
Webinar - Start to Stop
Van zaterdag 15 januari 2022
Bewegen Gezonde voeding
Locatie: Online Prijs: Betaald
Personen: Individueel, In groep

SPORT EN BEWEGING
Online yoga: gratis voor beginners en niet-beginners
maandag 31 januari 2022
Bewegen Gezonde voeding
Locatie: Online Prijs: Gratis

SPORT EN BEWEGING
Fotozoektocht Mol- en Darmkanker vzw
Van woensdag 1 september 2022
Bewegen Gezonde voeding
Locatie: Mol Prijs: Betaald

CITIZEN

Based on **health-related needs** and **wishes**, through **human-centered design**



Interreg 
2 Seas Mers Zeeën
EMPOWERCARE
European Regional Development Fund

 **Koning Boudewijnstichting**
Samen werken aan een betere samenleving



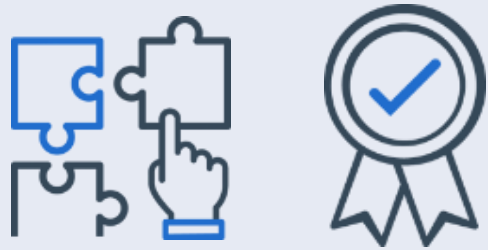
With **Health and digital literacy** organizations



True **informed consent**:
We Are



CARE PROVIDER



Integrated care

Technological: connected to national eHealth platform (EHR)

Referral: different actors primary care zones

Evidence-based population screening



POLICY



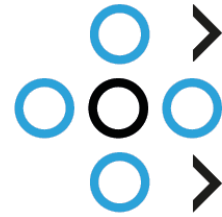
Population Health Management based on real-life data

Participation: co-creation and follow-up

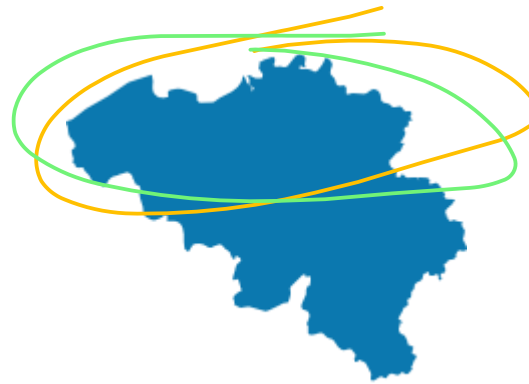
R&D



Blueprint on
implementation of **caring**
technologies



we are



Support to share data
for **own well-being**
and **public interest**,

Allow **ownership** of data



Contact points:

Jef.hooyberghs@uhasselt.be

Bart.buelens@vito.be

Nathalie.lambrechts@vito.be

<https://we-are-health.eu>

<https://savedata.be>

<https://bibopp.be>

THANK
YOU

Jef Hooyberghs, VITO - UHasselt